



BACARDÍ



MIAMI SAILING WEEK

EFG



SAILING INSTRUCTIONS

In this document you will find SI for:

- **Star Class (Circle Charlie)**
Page 2-6
- **Melges 20 and Melges 24 (Circle Bravo)**
Page 7-11
- **Viper, J/70 and VX One (Circle Alpha)**
Page 12-16



Star: BACARDI Miami Sailing Week

*Presented by EFG Bank
Coconut Grove, Florida
March 3 – March 8, 2014*

Sailing Instructions

1. RULES

- 1.1 The regatta will be governed by the current Racing Rules of Sailing (RRS) and by the International Star Class Yacht Racing Association Rules (ISCYRA) except as altered these sailing instructions.
- 1.2 The following US Sailing prescriptions or prescriptions to rules which apply are: Rules 61.4, 67, 76.1, 82 Appendix R. (See Attachment I). Other US SAILING prescriptions do not apply.
- 1.3 Appendix P will apply.
- 1.4 The regatta is open to Star Class boats which are in compliance with ISCYRA 21 and 26.
- 1.5 The Star Class weight limit will not be enforced for this regatta.
- 1.6 National letters and sail numbers shall be those entered on the entry form with no substitutions allowed. Bow identification numbers will be provided by the organizing authority and placed along with Sponsor decal on both sides of the bow according to instructions issued with the bow numbers. Boats will be identified by bow numbers.
- 1.7 Where there is a conflict between the notice of race and the sailing instructions the jury will decide which applies.

2. NOTICES TO COMPETITORS

Notices to competitors will be posted on the official notice board located in the north breezeway of Coral Reef Yacht Club (CRYC). Social event notices and general event notices will be posted at the Bacardi Village.

3. CHANGES TO THE SAILING INSTRUCTIONS

Any change to the sailing instructions will be posted before 0900 on the day it will take effect, except that any change to the schedule of races will be posted by 2000 on the day before it will take effect.

4. SIGNALS MADE ASHORE

- 4.1 Signals made ashore will be displayed on the Coral Reef Yacht Club flagpole.
- 4.2 When flag AP is displayed ashore, '1 minute' is replaced with 'not less than 60 minutes'. This changes Race Signals AP.

5. SCHEDULE OF RACES

5.1 Schedule of racing:

Date - Day	Warning Signal
3/3 Monday	11:55 - one race planned
3/4 Tuesday	11:55 - one race planned
3/5 Wednesday	11:55 - one race planned
3/6 Thursday	11:55 - one race planned
3/7 Friday	11:55 - one race planned
3/8 Saturday	10:55 - one race planned – no warning signal will be made after 1300 hours.

- 5.2 The schedule above is subject to change due to weather conditions. Changes will be posted in accordance with SI 3.
- 5.3 After a long postponement, several short sounds will be made approximately two minutes prior to the warning signal to alert boats that a race sequence will begin soon.

6. CLASS FLAG

The class flag will be a red star on a white background.

7. RACING AREA

The racing area will be approximately 1.5 to 2 nm east of Matheson Hammock. (See Attachment 2)

8. THE COURSES

- 8.1 The race courses will be as described in ISCYRA 34.3, as modified by these sailing instructions and any subsequent changes to the sailing instructions. (See Attachment 3)
- 8.2 No later than the warning signal, the race committee signal boat will display the course number with the distance and magnetic bearing to

the first mark.

8.3. Courses will not be shortened.

8.4 The length of the legs will not be changed. This changes RRS 33.

9. MARKS

9.1 Inflatable marks will be used for the course. A description of these marks will be posted on the official notice board before racing begins.

9.2 A gate may be employed at mark 3. Boats shall sail between the gate marks and round either mark.

9.3. For courses “0” and “1” an offset mark will be set at mark 1 for all legs.

10. THE START

10.1 Races will be started by using rule 26.

10.2 The starting line will be between a staff displaying an orange flag on the starboard end signal boat and a staff displaying an orange flag on the port end pin boat.

OR

10.3 A mid-line boat may be employed. If a mid-line boat is employed, the starting line shall be between a staff displaying an orange flag on the Race Committee signal boat and a staff displaying an orange flag on the mid-line boat, and the staff displaying an orange flag on the mid-line boat and a staff displaying an orange flag on the port end line boat.

10.4 The Race Committee signal boat may be protected by a nearby inflatable limit mark, which shall not rank as a starting mark. Boats shall not pass between the limit mark and the nearby signal boat when approaching the line to start.

10.4 A boat starting later than 10 minutes after her starting signal will be scored Did Not Start without a hearing. This changes rules A4.2 and A5.

11. RECALLS:

11.1 In the event of an individual recall, the bow number, sail number or identification of any boat or boats that are identified as OCS may be announced on VHF channel 71. Failure of a boat to see or hear her recall notification, and the timing and order of such hails, or the length of time it takes to make a notification on the VHF radio will not be grounds for redress. (This changes *Rules* 29.1 and 60.1 b)

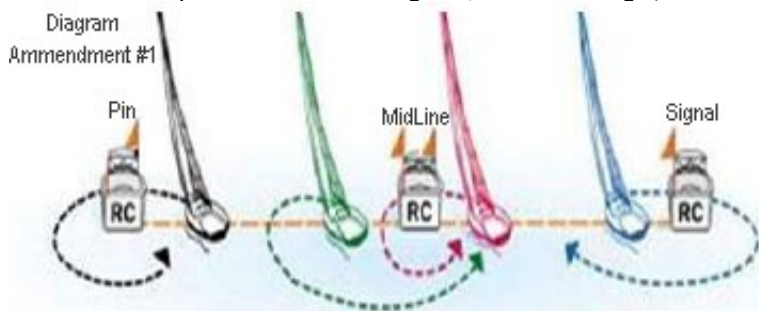
11.2 Individual Recall - Rule 29.1: in addition, if an individual recall is signaled a race committee boat displaying Code Flag X positioned near mark 1 will attempt to display bow numbers of the yacht(s) breaking this rule. Failure to receive notice is not grounds for redress.

11.3 Z Flag - Rule 30.2 add, if a general recall is signaled or the race is abandoned after the starting signal, the race committee signal boat will display the bow number(s) of boats breaking this rule and receiving a scoring penalty before the warning signal of the next race.

11.4 Black Flag - Rule 30.3 is changed. In the event of a general recall the race committee will post bow number(s) on the signal boat, **OR** in the absence of a general recall as a courtesy the race committee will attempt to display the bow number(s) of yachts breaking this rule, near mark 1. Failure to receive notice is not grounds for redress.

12. STARTING PENALTIES:

12.1 *Rule* 30.1 Round-an-End Rule is changed. Boats subject to this rule shall sail to the pre-start side of the line around either end, or around the mid-line boat, leaving it to port as if it were the port end of the starting line, before starting. (This changes *Rule* 30.1).



13. CHANGE OF THE NEXT LEG OF THE COURSE

To change the next leg of the course, the race committee will move the original mark or the finishing line to a new position, and the course will be reconfigured.

14. THE FINISH

The finishing line will be between a staff displaying an orange flag on a starboard end race committee boat and a staff displaying an orange



flag on a port end race committee boat or a nearby yellow mark at the port end of the finishing line.

15. TIME LIMITS AND TARGET TIMES

15.1 If no boat has passed Mark 1 within 40 minutes the race will be abandoned.

15.2 Boats failing to finish within 3 hours from the starting signal will be scored DNF. If no boat finishes within the time limit the race shall be abandoned.

15.3 Boats failing to finish within 30 minutes after the first boat sails the course and finishes will be scored DNF. This changes rules 35, 63.1, A4.2 and A5.

16. PENALTY FOR BREAKING RULES OF PART 2

16.1 The penalty for breaking a *Rule* of Part 2 is changed in that if a boat breaks a *Rule* of Part 2 her penalty will be a One-Turn Penalty including one tack and one jibe, unless she breaks a *Rule* of Part 2 within the 3 boat length zone. Then her penalty will be a Two-Turns Penalty. (This changes *Rule* 44)

17. INTERNATIONAL JURY

An international jury will be constituted in compliance with Appendix N, rules 70.5 and 91(b).

18. PROTESTS AND REQUESTS FOR REDRESS

18.1 The time limit for requesting a hearing or requesting redress is one hour after the race committee finish boat docks. The finish boat will post the docking time, finish results, and actions of the race committee including protests within the protest time after docking.

18.2 Protest forms will be available at the jury desk inside the main lobby at Coral Reef Yacht Club. The protest schedule board will be situated at the jury desk in the main lobby. The protest time will be posted on the Notice Board. The same protest time limit applies to all protests by the Race Committee and Jury about incidents they observe in the racing area and to request redress. This changes RRS 62.2

18.3 Notices will be posted on the official notice board 30 minutes after the protest time limit to inform competitors of hearing in which they are parties or named as witnesses. Hearings will be held in order received.

18.4 Boats scored as having not started or not finished will be posted on the Notice Board within 30 minutes before the end of protest time. Any boat feeling an error has been made may request a scoring inquiry which must be in writing and delivered to the race committee within the protest time limit. Requests for redress should be delivered in writing to the jury secretary within the protest time limit.

18.5 On the last day of racing a request for reopening a hearing shall be delivered:

- (a) Within the protest time limit if the requesting party was informed of the decision on the previous day;
- (b) No later than 30 minutes after the requesting party was informed.

18.6 On the last day of racing a request for redress based on a jury decision shall be delivered no later than 30 minutes after the decision was posted. This changes RRS 62.2

18.7 Protest Hearings will be held at Coral Reef Yacht Club.

19. SCORING

19.1 The Low Point scoring system shall be employed.

19.2 Six races are scheduled. One completed race is required to constitute a series.

19.3 When four (4) or more races have been completed, a boats series score will be the total of her race scores excluding her worst race.

19.4 Penalties for violations of the notice of race, sailing instructions and the Racing Rules of Sailing which are not a Part 2 or Part 3 infringement are at the discretion of the international jury and may include disqualification.

19.5 Scores will be posted on the Notice Board at CRYC.

19.6 Boats failing to meet the time limits of SI 15.2 and 15.3 will be scored without a hearing Did Not Finish.

20. BOAT IDENTIFICATION

The Race Committee will assign bow numbers to each participating boat. The numbers will be available at registration. All bow numbers shall be on a contrasting background and affixed according to instructions provided with bow numbers and sponsor decal.

21. PRIZES

Prizes will be given as follows:

21.1. A prize for the first place boat in the series for the Masters Division (skippers age 50 through 59 before the start of the first race),

21.2. A prize for the first place boat in the series for the Grand Masters Division (skippers age 60 and above before the start of the first race),

21.3. Competitors in the Master's Division and Grand Masters Division will also compete for series prizes,

21.4. Prizes for the first, second, third, fourth and fifth place boats in the series, and



21.5. The perpetual Bacardi Cup for the first place skipper and the Tito Cup for the first place crew in the series.

22. CHECK IN, SAFETY REGULATIONS, RETIRING

- 22.1 Each owner/skipper is requested to familiarize and share with crew the safety and first-aid notice found in the skipper bag.
- 22.2 Prior to the first race a boat sails each day, each boat shall sail on starboard tack past the transom of the signal boat before the first warning and hail her bow or sail number until acknowledged by the race committee. RRS A4.1 is changed to provide that boats not complying with this instruction will receive the same score as a boat not starting without a hearing. This changes RRS 63.1 and A5.
- 22.3 Boats in need of assistance from the race committee will wave an extended arm in the direction of any race committee vessel.
- 22.4 Boats retiring from racing will notify a race committee boat or if not practical inform the front desk at Coral Reef Yacht Club.

23. SUPPORT AND COACH BOATS

- 23.1 Team leaders, coaches and other support personnel are expected to monitor VHF 71 and to render assistance to a boat in danger when requested by the boat or the race committee or jury.
- 23.1 Team leaders, coaches and other support personnel shall stay outside areas where boats are racing from the time of the Warning signal until all boats have finished or retired or the race committee signals a postponement, general recall or abandonment.
- 23.2 Interference with boats racing or producing a race disturbing wake may result in expulsion from CRYC and the US Sailing Center.

24. REPLACEMENT OF CREW OR EQUIPMENT

- 24.1 A change of helmsman is not permitted.
- 24.2 Substitution of competitors will not be allowed without prior written approval of the jury. Once a crewmember has changed, the original crew may not return. There shall be no crew exchange on the final day of racing.

25. TRASH DISPOSAL, CLOTHING AND EXTRA SAILS

- 25.1 Boats shall not put trash in the water. Trash may be placed aboard support and race committee boats.
- 25.2 The race committee will not accept items of clothing or sails.

26. RADIO COMMUNICATION

ISCYRA 31.2.6 will be amended to allow VHF radios to be carried on all boats for safety purposes.

27. EQUIPMENT AND MEASUREMENT CHECKS

A boat or its equipment may be inspected at any time for compliance with class rules.

28. HAUL OUT - BERTHING

There are no haul out or berthing restrictions.

29. DISCLAIMER OF LIABILITY

Sailing is an activity that carries with it an inherent risk of damage and injury. Competitors participate in this regatta entirely at their own risk and are reminded to pay special attention to RRS 4, Decision to Race. The race organizers, including the OA, CRYC, Race Committee, Protest Committee, sponsors, volunteers, or any other affiliated organization or official, will not be responsible for damage to any boat or other property or the injury to any competitor, including death, sustained as a result of practice for or participation in this event on the water or ashore. By participating in this event, each competitor agrees to release the race organizers from any and all liability associated with such competitor's participation in this event to the fullest extent permitted by law. Rule 82 will not apply to the event in accordance with US Sailing regulations.

Sharon Bourke – PRO

A handwritten signature in black ink that reads 'P. Sharon Bourke'.

February 18, 2014



MIAMI SAILING WEEK

EFG



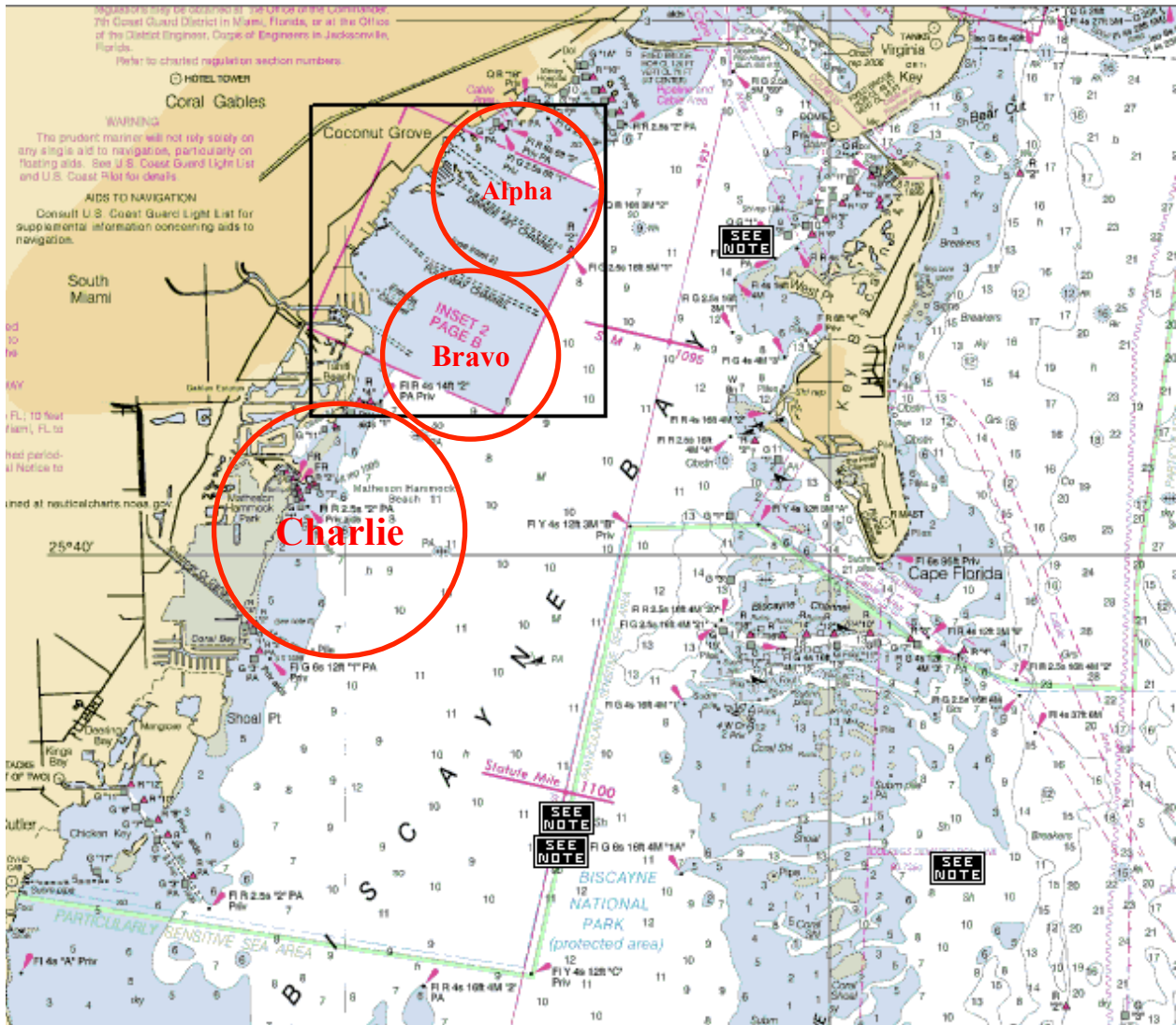
ADDENDUM 2

Bacardi Miami Sailing Week – Racing Circles 2013

Viper 640 / J70 / VX-One on **ALPHA** Circle

Melges 24 & 20's are on **BRAVO** Circle

Star's are on **CHARLIE** Circle



ALPHA	Diameter – 1.5 nm	Center – N 25 43.200 W 080 11.800
	Radio channels – 72 and 73 (or private?)	
BRAVO	Diameter – 1.5 nm	Center – N 25 41.800 W 080 13.100
	Radio channels – 69 and 74	
CHARLIE	Diameter – 2.0 nm	Center – N 25 40.200 W 080 14.800
	Radio channels – 71 and Private	



SAILING INSTRUCTIONS

March 5 – March 8, 2014

1. RULES

- 1.1 The 2014 BACARDI Miami Sailing Week and the Audi Melges 20 Miami Winter Series No. 3 will be governed by the rules as defined in the current Racing Rules of Sailing (RRS).
- 1.2 These Sailing Instructions (SI's), including amendments, will take precedence in the case of a conflict with the Notice of Race (NOR). This changes RRS 63.7.
- 1.3 Boats shall not put trash in the water.

2. RADIO COMMUNICATION

- 2.1 All competing boats shall carry a hand held VHF radio capable of transmitting and receiving VHF channels (US) for safety purposes and Race Committee communication.
- 2.2 The Race Committee's VHF channel will channel 69.
- 2.3 Race Committee broadcasts concerning its intentions, the course to be sailed, starting times, course changes, OCS hails, etc. are a courtesy only. Failure of the Race Committee to make a broadcast, the timing of a broadcast, or the failure of a boat to hear a broadcast shall not be grounds for redress under rule 62.1(a).
- 2.4 Except for Race Committee VHF channel 69, no competitor shall make or receive radio or cell phone communications commencing from the first Warning Signal of the day until the conclusion of the day's racing for that competitor, except in the case of an emergency.
- 2.5 The Race Committee will attempt to announce its intentions for the day on the Race Committee VHF radio channel at 0900 each morning of the event.
- 2.6 In the event of an onshore Postponement, the Race Committee shall make update announcements on the Race Committee VHF radio channel.

3. NOTICES TO COMPETITORS

- 3.1 Notices to competitors will be posted on the Official Notice Board located on the first floor of the Coconut Grove Sailing Club (CGSC). Social event notices and general event notices will be posted at the Bacardi Village.
- 3.2 The Race Committee will attempt to e-mail competitors any posted notices or regatta announcements.

4. CHANGES TO SAILING INSTRUCTIONS

- 4.1 Any changes will be posted by 0830 on the day they will take effect, except that any changes in the Schedule of Races will be posted no later than one (1) hour after the latest protest time limit on the day before they take effect (SI 16.2). In the event of no racing on a day, any changes in the Schedule of Races will be posted no later than 1700 hours on the day before they take effect.
- 4.2 Oral changes to the Sailing Instructions may be given on the water. The Race Committee Signal Boat shall display Code Flag "L" and announce the change on the Race Committee VHF Channel in accordance with rule 90.2(c). Competitors may also approach the Signal Boat and verbally receive the change while Code Flag "L" is displayed.

5. SIGNALS MADE ASHORE

- 5.1 Signals made ashore will be displayed from the main flagpole at the CGSC.
- 5.2 Code Flag "L", when displayed ashore signifies that a change in Sailing Instructions or other notice to competitors has been posted on the Official Notice Board.
- 5.3 Code Flag "AP" when displayed ashore means that the start has been postponed. The Warning Signal will be made not less than 60 minutes after the lowering of this signal.
- 5.4 Code Flag "N" over "A" and 3 sounds when signaled ashore means that all racing is abandoned for today.

6. SCHEDULE OF RACES

- 6.1 March 6, 7 & 8, 2014 - Up to 8 races are scheduled
- 6.2 The Skipper's Meeting will be at Coconut Grove Sailing Club at 1730 on Wednesday, March 5th.
- 6.3 The scheduled time for the Warning Signal for the first race each day is 1055 hours.
- 6.4 The starting order shall be Melges 24's followed by the Melges 20 class.
- 6.5 The Race Committee Finishing Boat will signal its intent to start another race that day by displaying Code Flag "R" at the finish of a race. Code Flag "R" will be lowered with one sound, one minute before the next Warning Signal is made.



6.6 On the final day of the regatta, the Initial Warning Signal for the final race will not be made after 1400 hours. However, after this Initial Warning, any Warning Signal that follows one or more General Recalls may occur after 1400.

7. RACING AREAS

7.1 All racing will be on Biscayne Bay in an area approximately 1 to 3 miles SSE of Brennan Channel Marker "1" (Fl.G 5sec 8ft).

8. THE COURSES

8.1 Courses are described below and in "ADDENDUM #1- COURSE ILLUSTRATIONS".

8.2 Course Designations:

COURSE # 4 - Start - W - OS - Leeward Gate - W - OS - Finish

COURSE # 5 - Start - W - OS - Leeward Gate - W - OS - Leeward Gate - Finish

8.3 The Windward Mark (W) and the accompanying offset mark (OS) shall be left to port.

8.4 Courses will be posted on a Race Committee Signal Boat course board prior to the Warning Signal of each race. The number of the course to be sailed, the approximate magnetic compass bearing, and distance from the starting line to the first mark will be displayed. (This changes RRS 27.1)

9. MARKS

9.1 The original Windward Mark (W) will be a yellow inflatable mark.

9.2 The windward offset mark (OS) will be a round inflatable mark. The offset mark will be laid to port of the Windward Mark, approximately 150 feet away.

9.3 A Leeward Gate will be used and the original Leeward Gate will be red inflatable marks.

9.4 Except when there is a change of course, the Gate will be located to windward of the Starting Line. Boats shall sail between the Gate marks from the direction of the previous mark and round either Gate mark.

9.5 If one of the Leeward Gate marks is missing, boats shall round the one existing leeward mark to port.

10. THE START

10.1 Races will be started in accordance with RRS 26.

10.2 The class flags will be the Melges 24 Insignia on a white flag and the Audi Melges 20 Insignia on a white flag.

10.3 The starting line will be between a staff displaying an orange flag on the Race Committee Signal Boat and a staff displaying an orange flag on a port end Line Boat. In the event that the Pin End Boat is not on station, it will be replaced by an inflatable mark.

10.4 An inflatable buoy may be tethered to the stern of the committee boat(s) and will function as an extension of the Race Committee boat. Boats shall not pass between the Race Committee vessel and an inflatable buoy tethered to it.

10.5 A boat starting later than four (4) minutes after her starting signal will be scored Did Not Start (DNS) without a hearing. (This changes RRS A4.1)

11. RECALLS

11.1 In the event of an individual recall, the sail numbers, bow numbers or identification of any boat or boats that are identified as OCS may be announced on the Race Committee VHF channel. Failure of a boat to see or hear her recall notification, and the timing and order of such hails, or the length of time it takes to make a notification on the Race Committee VHF channel will not be grounds for redress. (This changes RRS 62.1 (a).)

11.2 The Race Committee may hail the bow numbers or sail numbers of boats that are over the line in the last one (1) minute of the starting sequence after the I and / or Z Flag has been lowered. Failure of a boat to hear her recall notification, and the timing and order of such hails will not be grounds for redress. (This changes RRS 29.1 and 62.1 (a).)

12. CHANGING THE NEXT LEG OF THE COURSE

12.1 If the change is for a windward leg, the new mark will be an orange inflatable tetrahedron, unless the change is for the final leg of Course 5, which in that case, the finish line will be in the new position.

12.2 If the change is for a leeward leg, the new gate marks will be yellow inflatables, unless the first change is for the final leg of Course 4, which in that case, the finish line will be in the new position.

12.3 The Race Committee will attempt to broadcast any course changes over the Race Committee VHF channel.

13. FINISH

13.1 The Finish Line for leeward finishes (Course 4) will be on the opposite side of the Race Committee Boat from the Starting Line. The Finish Line will be between a staff displaying an orange flag on a Race Committee Boat and a nearby inflatable mark, or between staffs displaying orange flags on Race Committee Boats.



13.2 The Finish Line for windward finishes (Course 5) will be between a staff displaying an orange flag on a Race Committee Boat and a nearby inflatable mark to port of the Committee Boat, or between staffs displaying orange flags on Race Committee Boats.

14. PENALTY SYSTEM

14.1 A boat that may have broken a rule of RRS Part 2 may take a One-Turn Penalty including one tack and one jibe. (This changes RRS 44.1.).

14.2 The penalty, if any, for a violation of a rule other than a rule of RRS Part 2 or Rule 31 will be at the discretion of the Protest Committee and may be other than disqualification. This changes RRS 64.1(a).

14.3 If a breach of class rules is found, penalties shall be at the discretion of the Protest Committee, in consultation with a non-competing Class Representative.

15. TIME LIMITS

15.1 Any race in which no boat finishes within two (2.0) hours of the start shall be abandoned.

15.2 Boats failing to finish within 30 minutes after the first boat sails the course and finishes will be scored as a "TLE" and will be scored two additional points more than the number of boats that finished within that time. (This changes RRS 35, 63.1, A4 and A5).

16. PROTESTS AND REQUESTS FOR REDRESS

16.1 A boat intending to protest is requested to notify a Race Committee Finish Boat of its intention and the identity of the protested boat(s) as soon as possible after finishing.

16.2 Protest forms will be available at the Jury desk at Biscayne Bay Yacht Club (2540 S. Bayshore Dr. -- just past Shake-A-Leg from CGSC). Protests and requests for redress shall be delivered to the Jury desk within the protest time limit. The time limit is one (1) hour after the Race Committee Finish Boat docks. Protest hearings will be conducted at Biscayne Bay Yacht Club as soon as possible.

16.3 Notices will be posted no later than 15 minutes after the protest time limit to inform competitors of hearings in which they are parties to or named as witnesses. It is each boat's sole responsibility to check the Protest Notice Board to see if she is cited in a protest. Should any party fail to appear when called for a hearing, the Protest Committee may proceed in accordance with RRS 63.3(b). Representatives of boats who are parties to hearings and their witnesses shall remain on call in the vicinity of the Regatta desk until excused by the Protest Committee.

16.4 On the last day of the regatta a request for reopening a hearing shall be delivered (a) within the protest time limit if the party requesting reopening was informed of the decision on the previous day; (b) no later than 30 minutes after the party requesting reopening was informed of the decision on that day. This changes rule 66.

16.5 On the last scheduled day of racing a request for redress based on a protest committee decision shall be delivered no later than 30 minutes after the decision was posted. This changes rule 62.2.

16.6 If the RC posts the results on the official notice board before the protest time limit, a request for redress based on being scored OCS, ZFP or BFD shall be made no later than 30 minutes after the protest time limit. This changes the first sentence of rule 62.2

16.7 The representative from each yacht who attends the hearing shall be the owner or the Category 1 helmsman. Category 3 sailors are not allowed in the hearing, or to be in contact with the representatives at the hearing per class rules.

16.8 Video and photos taken from any support and/or coach boat shall not be used as evidence at protest hearings. This alters RRS 63.6.

17. SCORING

17.1 The Low Point Scoring System, as provided in RRS Appendix "A" shall apply, except as changed in this Section of these Sailing Instructions as follows:

17.2 When fewer than six (6) races have been completed, a boat's series score will be the total of her race scores. When six or more races have been completed, a boat's series score will be the total of her race scores excluding her worst score. Two races are required to be completed to constitute a series.

18. BOW NUMBERS & EVENT ADVERTISING

18.1 For Melges 24's, bow numbers will be provided to all registrants and shall be displayed on both sides of the bow. The leading edge of each bow number shall be no farther back than 12 inches aft of the bow. Boats failing to properly display bow numbers and event advertising may be subject to protest by the Race Committee only. Instructions will be in the bow numbers envelope.

18.2 Each Melges 20 shall have clearly visible bow numbers as provided by the manufacturer. Boats failing to properly display bow numbers and event advertising may be subject to protest by the Race Committee only. Instructions will be in the bow numbers envelope.

19. LAUNCHING & HAUL OUT REQUIREMENTS

19.1 All boats must be in the water by 1700 on the day before racing begins.



19.2 All boats are to remain in the water for the duration of the regatta except according to the terms, and with permission of the Principal Race Officer or the Regatta Chairman in the event of a required emergency repair.

20. TEAM AND PRIVATE SUPPORT BOATS

20.1 Competitors are responsible for the compliance of their support boats with their respective Class Rules concerning their activities on the water.

20.2 Support boats are required to monitor Race Committee VHF Channel 69 and provide assistance to any competitor in danger if notified to do so by the Race Committee.

21. PRIZES

21.1 The top five boats overall in each class shall receive Series trophies. In addition, the top three placing all Corinthian Audi Melges 20's will receive prizes.

21.2 For the Audi Melges 20 Miami Winter Series overall, the top five boats will receive prizes. In addition, the top overall placing all Corinthian team will receive a prize.

22. SAFTY REQUIREMENTS

22.1 Each owner/skipper is requested to familiarize and share with crew the safety and first-aid notice found in the skipper bag.

22.2 A boat that retires from a race or does not intend to start a scheduled race shall promptly report this to the Race Committee via hailing or calling on Race Committee VHF channel 69, and receive acknowledgement. If this is not possible, she shall promptly report her actions to the Regatta desk on shore at CGSC.

23. DISCLAIMER OF LIABILITY

23.1 Sailing is an activity that carries with it an inherent risk of damage and injury. Competitors participate in this regatta entirely at their own risk and are reminded to pay special attention to RRS 4, Decision to Race. The race organizers, including the OA, Coconut Grove Sailing Club, Melges Performance Sailboats, Race Committee, Protest Committee, sponsors, volunteers, or any other affiliated organization or official, will not be responsible for damage to any boat or other property or the injury to any competitor, including death, sustained as a result of practice for or participation in this event on the water or ashore. By participating in this event, each competitor agrees to release the race organizers from any and all liability associated with such competitor's participation in this event to the fullest extent permitted by law. Rule 82 will not apply to the event in accordance with US Sailing regulations.

CGSC Regatta Chairman:	Ron Rostorfer
Principal Race Officer:	Bruce Golison
AM20CA Administrator:	Joy Dunigan



MIAMI SAILING WEEK
EFG



ADDENDUM #1 - COURSE ILLUSTRATIONS

EXAMPLE: COURSE BOARD DISPLAYED ON R/C SIGNAL BOAT

Course: 4
Distance To W: 1.0
Bearing To W: 120

COURSE # 4 (Leeward Finish)

Start - W - OS - Leeward Gate - W - OS - Finish



Start ⌘ ----- ⌘ R/C ⌘ ----- ⌘ Finish

COURSE # 5 (Windward Finish)

Start - W - OS - Leeward Gate - W - OS - Leeward Gate - Finish

Finish ⌘ ----- ⌘ R/C



Start ⌘ ----- ⌘ R/C



MIAMI SAILING WEEK
EFG



Viper 640, VX One and J/70 Classes

Sailing Instructions

March 5 – March 8, 2014

1 RULES

- 1.1 The regatta will be governed by the rules as defined in *The Racing Rules of Sailing* (RRS).
- 1.2 The following prescriptions of US Sailing shall apply: 61.4, 67, and 76.1.
- 1.3 Class specific *rule* changes and updates are shown in Attachment III.
- 1.4 All boats are requested to display bow numbers and sponsor decals. The primary identification of all boats will be bow numbers.

2 NOTICES TO COMPETITORS

- 2.1 Notices to competitors will be posted on the regatta notice board located at Coral Reef Yacht Club.
- 2.2 The race committee will use VHF channel 72 to communicate with competitors on the water. Failure to hear any broadcasts shall not be grounds for redress.

3 CHANGES IN SAILING INSTRUCTIONS

Any changes will be posted before 0800 on the day it will take effect, except that any change in the schedule of races will be posted before 2000 the day before the change is to take effect.

4 SIGNALS MADE ASHORE

- 4.1 Signals made ashore will be displayed from the flagpole located at Biscayne Bay Yacht Club.
- 4.2 When flag AP is displayed ashore, '1 minute' is replaced by 'not less than 45 minutes' in the race signal.

5 CLASS FLAG

Class flags will be a white flag with the class insignia.

6 SCHEDULE

Thu, Mar 6 – Sat, Mar 8
1055 First Warning, subsequent races to follow.
No warning after 1400 on Saturday.

7 THE COURSES

- 7.1 The diagrams and descriptions in Attachment II show the courses, including the approximate angles between legs and the order in which marks are to be passed.
- 7.2 If only one leeward mark is present it shall be rounded to port.

- 7.3 The course identifier, approximate magnetic bearing and distance in nautical miles to the first mark will be displayed from the race committee signal boat prior to the warning signal for each race.

An example is shown below:

5
270
1.0

Five legs, finishing to weather
Approx magnetic bearing to weather mark
1.0 nm to weather mark

8 MARKS

- 8.1 The windward mark will be red with EFG logo. The leeward marks will be red with Bacardi logo. The starting mark will be a yellow tetrahedron. The finish mark will be yellow with a West Marine logo. The offset mark will be a small orange ball.
- 8.2 New marks, as provided in SI 11, will be orange cylinders.

9 THE START

The starting line will be between a staff displaying an orange flag on the race committee signal boat at the starboard end and either (a) the course side of the starting mark or (b) a staff displaying an orange flag on a boat at the port end.

10 RECALLS

- 10.1 When an individual recall is signaled, the race committee will attempt to hail OCS boats on VHF.
- 10.2 The timing and order of such hails or the failure of a boat to hear the hail shall not be grounds for redress, changing RRS 62.

11 CHANGE OF THE NEXT LEG OF THE COURSE

To change the next leg, the race committee will lay a new mark (or move the finishing line) and remove the old mark as soon as practicable. When in a subsequent change a new mark is replaced, it will be replaced by an original mark.

12 THE FINISH

The finishing line will be between a staff displaying an orange flag on a race committee boat and the course side of the finishing mark.

13 TIME LIMITS

- 13.1 If no boat has passed Mark 1 within 45 minutes, the race will be abandoned.



MIAMI SAILING WEEK



13.2 The time limit for the first boat to sail the course and finish is 90 minutes.

13.3 Boats still racing more than 15 minutes after the first boat sails the course and finishes will be scored TLE (Time Limit Expired) without a hearing. This changes RRS 35, A5, and A11.

14 PROTESTS AND REQUESTS FOR REDRESS

14.1 Protest forms are available in the Jury Room located at Coral Reef Yacht Club and shall be delivered there within the protest time limit which is 60 minutes after the race committee finish boat docks after the last race of the day.

14.2 The race committee will post a list of penalties being assigned by the race committee prior to the end of protest time limit. The deadline for requesting redress based on these scores will be either 30 minutes after posting of the penalty notice or the protest time limit, whichever is later. This changes RRS 62.2.

14.3 Notices will be posted within 30 minutes of the protest time limit to inform competitors of hearings and arbitration hearings in which they are parties or named as witnesses. Hearings will be held in the Jury Room, beginning as soon as practical.

14.4 On the last day of the regatta a request for reopening a hearing shall be delivered (a) within the protest time limit if the party requesting reopening was informed of the decision on the previous day; (b) no later than 30 minutes after the party requesting reopening was informed of the decision on that day. This changes RRS 66.

15 SCORING

15.1 Eleven races are scheduled. Three races are required to be completed to constitute a regatta.

15.2 Each boat's regatta score shall be the total of her race scores excluding her worst score, except that if less than five races are sailed, each boat's series score shall be the total of her race scores.

15.3 Boats scored TLE will be scored points equal to the number of boats finishing within the time limit plus two points. This changes RRS 35, A4.2 and A11.

16 SAFETY

16.1 Each owner/skipper is requested to familiarize and share with crew the safety and first-aid notice found in the skipper bag.

16.2 Prior to the warning signal for the first race of each day in which it intends to compete, each boat is requested to check in by VHF or sail by the race committee signal boat and hail its sail number.

16.3 A boat retiring from a race or leaving the racing area early shall promptly notify the race committee either

by hail, over VHF, or by telephone to the Event Chairman at 305-915-1438.

17 CREW

17.1 No changes to crew shall be allowed except with written approval of the Race Committee.

17.2 Requests for replacement of crew and any reply shall be posted on the regatta notice board.

17.3 The same number of persons shall sail throughout the event.

18 RADIO EQUIPMENT

A boat shall neither make radio or other data transmissions while racing nor receive radio or mobile phone communication not available to all boats, except for emergencies.

19 DISCLAIMER OF LIABILITY

Sailing is an activity that carries with it an inherent risk of damage and injury. Competitors participate in this regatta entirely at their own risk and are reminded to pay special attention to RRS 4, Decision to Race. The race organizers, including the OA, CRYC, Race Committee, Protest Committee, sponsors, volunteers, or any other affiliated organization or official, will not be responsible for damage to any boat or other property or the injury to any competitor, including death, sustained as a result of practice for or participation in this event on the water or ashore. By participating in this event, each competitor agrees to release the race organizers from any and all liability associated with such competitor's participation in this event to the fullest extent permitted by law. Rule 82 will not apply to the event in accordance with US Sailing regulations.

20 HAUL OUT - BERTHING

Boats are requested to stay at their assigned location and cannot be hauled out without RC permission.



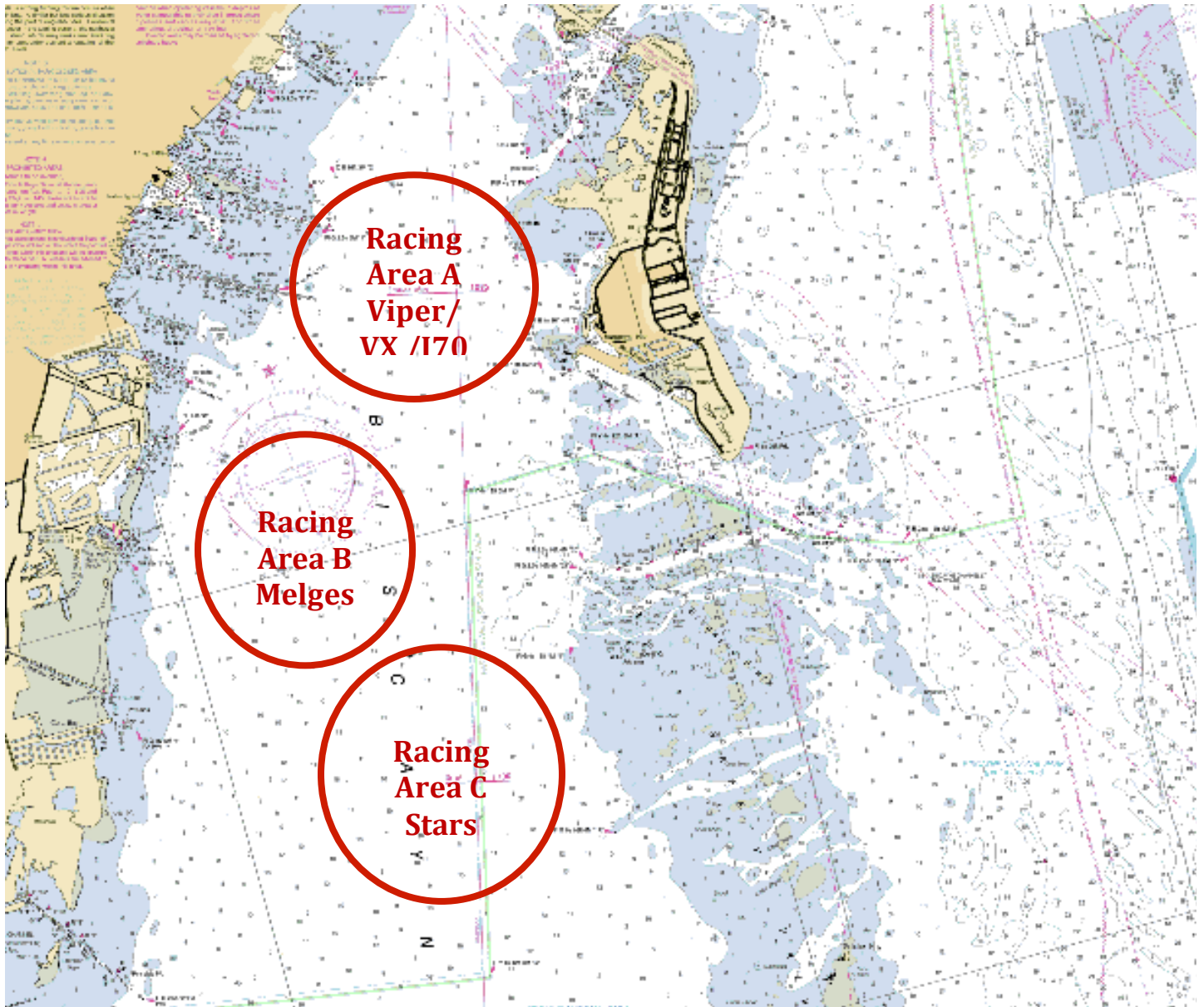
MIAMI SAILING WEEK

EFG 16



Attachment I – Approximate Racing Areas

ALPHA	Diameter – 1.5 nm	Center – N 25 43.200 W 080 11.800
	Radio channels – 72 and 73 or private	
BRAVO	Diameter – 1.5 nm	Center – N 25 41.800 W 080 13.100
	Radio channels – 69 and working channel 74	
CHARLIE	Diameter – 2.0 nm	Center – N 25 40.200 W 080 14.800
	Radio channels – 71 and Private	





MIAMI SAILING WEEK

EFG



Attachment II: COURSE DIAGRAMS

Course 4	Course 5
Start, 1 (port), 1a (port), between 2S and 2P, 1(port), 1a (port), finish	Start, 1 (port), 1a (port), between 2S and 2P, 1(port), 1a (port), between 2S and 2P, finish



MIAMI SAILING WEEK

EFG

Attachment III: Class Specific *Rule* Changes and Updates

1 The following *rules* are changed for Vipers:

- 1.1 There are no minimum or maximum crew weight limits for this regatta, but boats shall race with three or four aboard.
- 1.2 PENALTY SYSTEM FOR VIPERS - RRS 44.1 is changed so that a Two-Turn Penalty is replaced by a One-Turn Penalty except for breaches of RRS 18.

2 The following *rules* are changed for J/70s:

- 2.1 RRS 42.3(c) is changed to allow the gennaker sheet to be played without restriction.
- 2.2 As permitted in J/70 Class Rules, Section I, the following changes are made for this event:
 - 2.2.1 Spare Gennaker

One spare class gennaker (that meets the requirements of C.10, G.2 and G.5) may be presented for measurement and registration for an event, and carried aboard, but shall not be used during an event except when the primary gennaker has been lost or damaged to the point where it cannot be effectively repaired while afloat.
 - 2.2.2 Support Boats

Individual support or coach boats shall not have contact of any nature, including:

 - (i) communication by radio, telephone, internet, vocal signal, visual signaling of any kind (i.e., tactical placement, use of flags and/or different colors of clothing) or
 - (ii) the transfer of crew, equipment or supplies, with a registered racing boat from the time the boat leaves its dock or mooring each day until the boat has finished racing for the day.

Notwithstanding the foregoing, (i) late arriving crew, food and drink may be transferred to a racing boat prior to the first race of the day, and (ii) crew may be transferred in the event of an unforeseen personal emergency. Infringements of this rule will result in a penalty to the boat associated with the support boat. Such penalty may be either penalties or disqualification at the discretion of the protest committee or jury.

3 The following *rules* are changed for VX One:

- 3.1 PENALTY SYSTEM for VX One: RRS 44.1 and 44.2 are changed as follows: Her penalty shall be a one turn penalty including one tack and one gybe.
- 3.2 RRS 42.2 (a) is changed as follows: Unlimited trimming and easing of the Asymmetrical Spinnaker to promote a plane shall be permitted.
- 3.3 RRS 50.4 shall not apply.